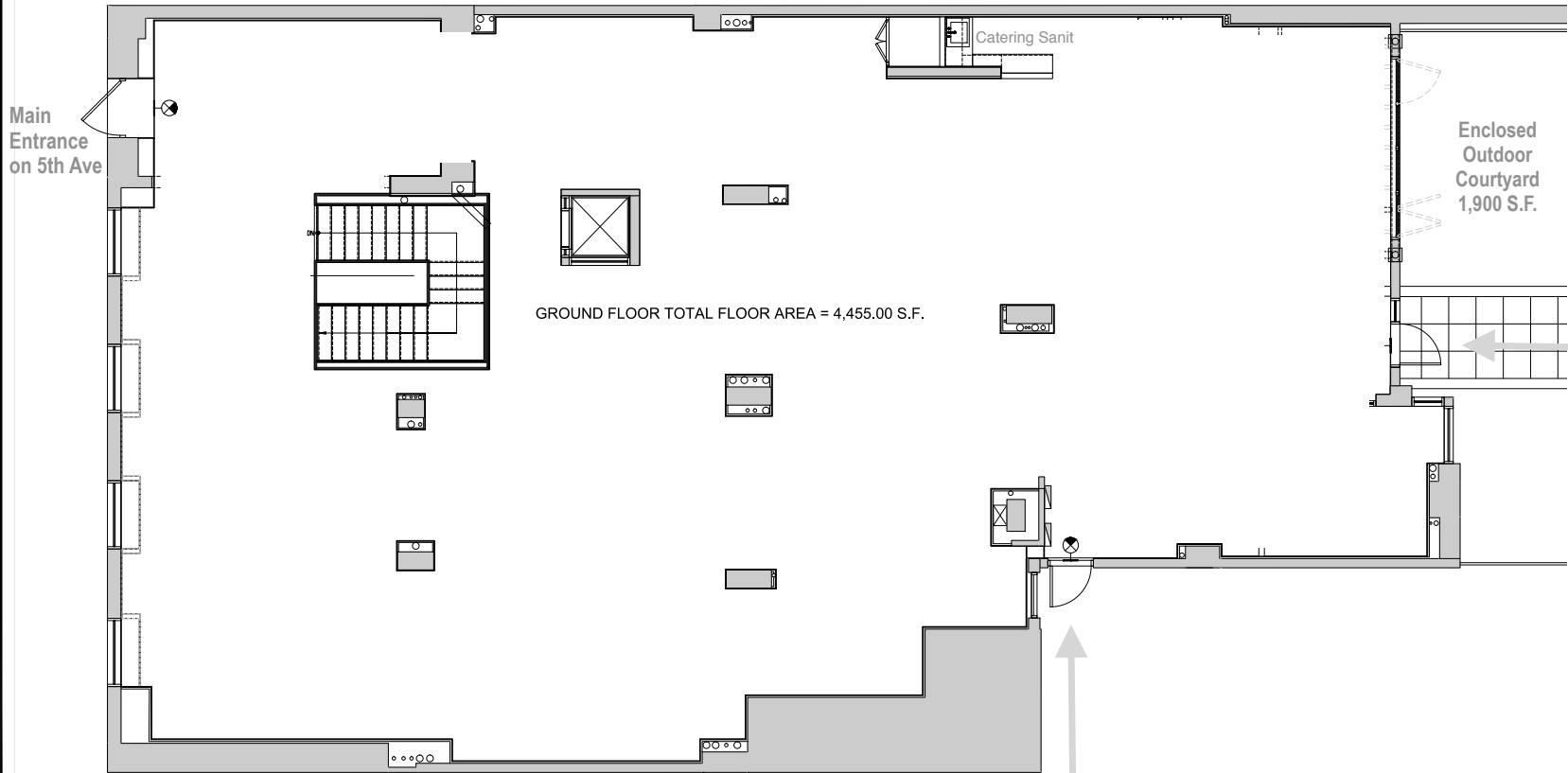


**(R)evolve Fifth Avenue**  
**800B Fifth Avenue, New York, NY 10065**



GROUND FLOOR TOTAL FLOOR AREA = 4,455.00 S.F.

Enclosed  
 Outdoor  
 Courtyard  
 1,900 S.F.

Main  
 Entrance  
 on 5th Ave

Catering Sanit

Primary  
 VIP Entrance  
 from  
 Residential  
 Bldg

Load In/Out from 61st Street

**GROUND FLOOR PLAN**

SCALE : 1/4" = 1'-0"

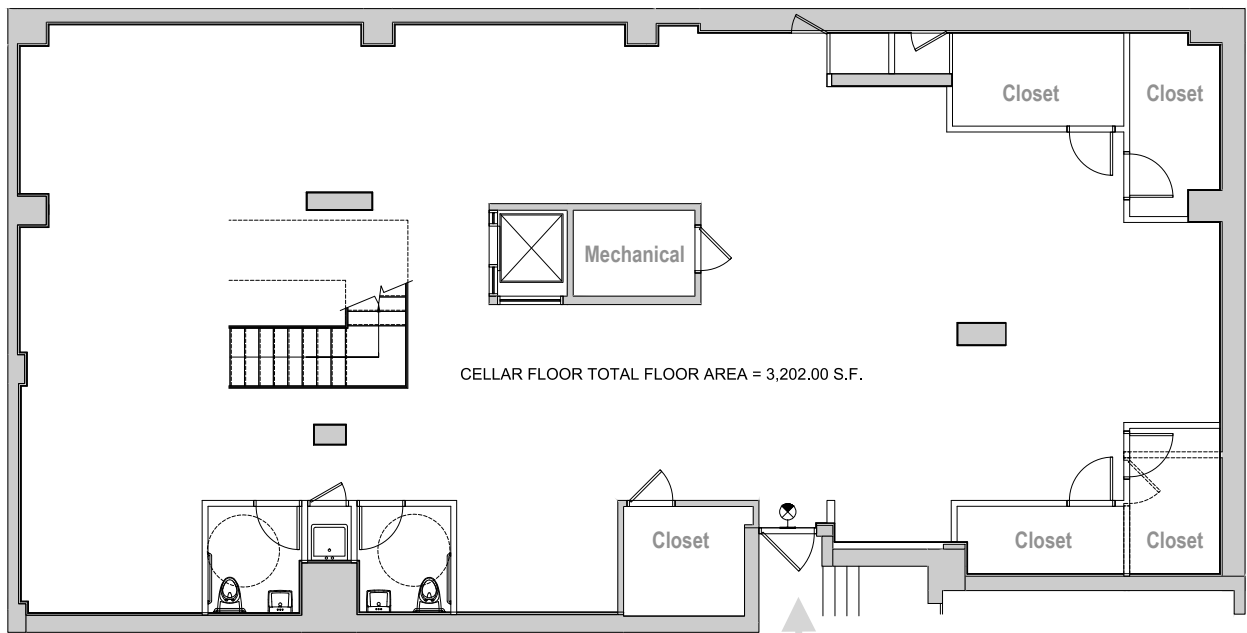
Ceiling Heights  
 - 11.2 ft. Exposed Areas  
 - 8.6 ft. Under Drop Down Ceiling

REVISIONS	DATE	BY
1		
2		
3		
4		
5		
6		
7		

800 FIFTH AVENUE  
 NEW YORK, NY 10065

GROUND FLOOR PLAN

SEAL & SIGNATURE	DATE	11/21/2017
	JOB No.	
	DRAWING BY:	
	SCALE	1/4" = 1'-0"
DWG No.		A-001.0.0



CELLAR FLOOR TOTAL FLOOR AREA = 3,202.00 S.F.

**CELLAR FLOOR PLAN**

SCALE : 1/4" = 1'-0"

Ceiling Heights  
 - 12.2 ft. Back Portion is 9 ft.  
 - 8.6 ft. Under Drop Down Ceiling

Parking Garage  
 VIP Entrance

REVISIONS	DATE	BY
1		
2		
3		
4		
5		
6		
7		



800 FIFTH AVENUE  
 NEW YORK, NY 10065

CELLAR FLOOR PLAN

SEAL & SIGNATURE	DATE: 11/21/2017
	JOB No.
	DRAWING BY:
	SCALE: 1/4" = 1'-0"
	DWG No. A-001.0.0